

REFINA

- powerful 2500w motor
- compact & easy to use machine
- removable front dust guard for edging
- adjustable handle
- leaves smooth & level finish
- for use by industrial & epoxy floor contractors
- domestic kitchen & wet area renovation
- factory maintenance & refurbishment
- commercial & carpet floor trades

EBS180F concrete grinder
483173



EBS180F concrete grinder
Power 2500w
Speed 8500rpm
Weight 10.5kg
Disc 180mm
Prep rate 40m/hr
Vibration level 6.5m/s
Noise level 79dBA
Voltage 110v or 230v





EIBENSTOCK

The 110v EBS180F runs off a 5kva transformer. Use a separate transformer for a dust extraction vac



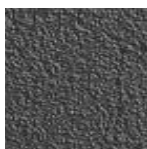
EBS180F DIAMOND FLOOR GRINDER

FLOOR PREP SURFACES	PD23
adhesive, black jack bitumastic, thick	✓
adhesive residues, carpet & vinyl	✓
adhesives, tile cements	✓
anti skid coatings	✓
bitumen floor paints	✓
car park & bridge deck membranes	✓
carpet residues	✓
cementitious floor toppings, smoothing	✓
coatings, elastomeric & rubberised	✓
coatings, epoxy, polyurethane	✓
concrete surface laitance	✓
concrete, smooth, trowelled	✓
damp proof membrane	✓
epoxy screed	✓
factory & warehouse paints	✓
factory floor contaminants, oil, grease	✓
floor paints	✓
grp residues	✓
latex, self-levelling & smoothing compounds	✓
marble & granite tiles	✗
micro cement floor finishes	✗
polished concrete	✗
precast concrete	✓
road markings	✓
rubber & tyre residue	✓
screed, anhydrite	✓
screed, liquid, smoothing, latex	✓
screed, sand & cement	✓
slabs, flag stones	✓
stone tiles, riven, natural, uneven	✗
stone tiles, sawn, honed, smooth	✗
terrazzo tiles, limestone, smooth	✗
tiles, ceramic, terracotta	✗
tiles, concrete	✓
waterproof membranes	✓

EBS180F ABRASIVE DISCS		APPLICATIONS
	DX7-G21 diamond cup disc, 21 segments Size 7"(180mm) Grit 40 Stock code: 315129	For removing thick coatings & adhesives
	DX7-K9 diamond cup disc, PCD segments Size 7"(180mm) Grit 40 Stock code: 315169	For removing thick coatings & adhesives
	Hard backed ribbed coarse disc Size 7"(180mm) Grit 12,16,24,36 Stock code: 305181	For surface grinding & coating removal



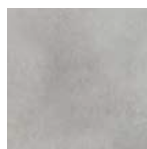
floor paint



thick coatings



concrete



screed



floor coatings



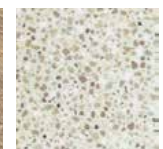
bitumens



tile adhesive



carpet adhesive



terrazzo